

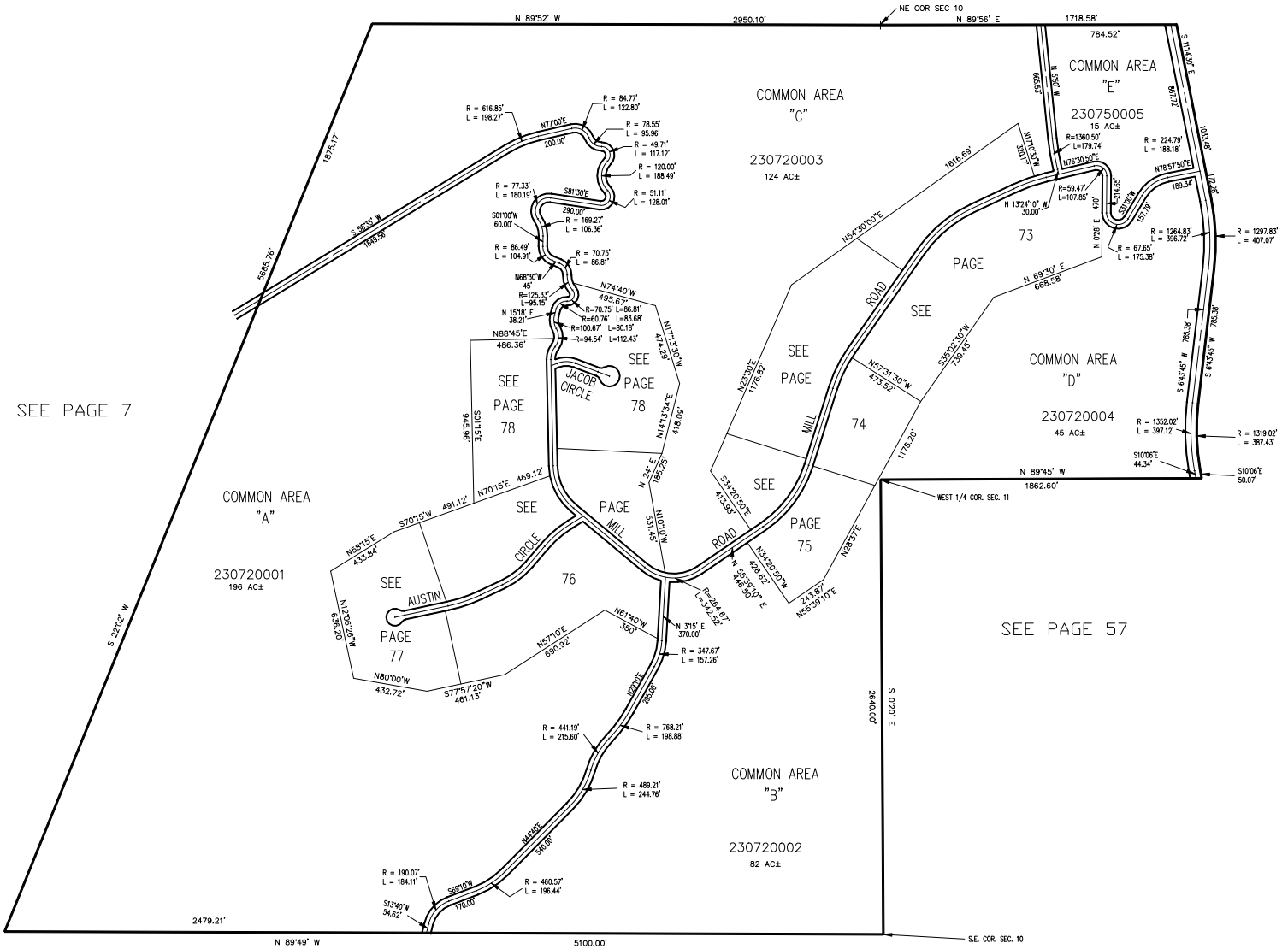
PART OF SECTIONS 10 & 11, T.6N., R.3E., S.L.B. & M.  
**CAUSEY ESTATES SUBDIVISION NO. 2**

IN WEBER COUNTY

TAXING UNIT: 58

SCALE 1" = 500'

SEE PAGE 7



SEE PAGE 7

FOR COMPLETE ENG DATA SEE  
 ORIGINAL DEDICATION PLAT IN  
 BOOK 19, PAGES 62,63,64 OF RECORDS.